



Livingston Area Education for Employment

Virtual Career Exploration

Welcome to the Livingston Area Education for Employment's Virtual Career Exploration. We invite you to explore various opportunities within the LAEFE, as well as Livingston County as a whole.

How do I participate?

Complete these steps below:

1. Take the career interest inventory
2. Match to a career cluster
3. Explore programs and local businesses with your cluster
4. Submit exit survey

1. Take the Career Interest Inventory

CareerOneStop provides an Interest Assessment that only takes about 5 minutes. In 30 questions, find out what careers fit your best interests and activities. Click here to take the survey: <https://www.careeronestop.org/getmyfuture/toolkit/interest-assessment.aspx>

What do I do with my results?

Find out your three top strengths: RIASEC provides a framework of what your strongest personality traits are - Realistic, Investigative, Artistic, Social, Enterprising, and Conventional. More information on each of these personality types can be found in the following graphic.



Pick the Career that is right for you! After this assessment, you will be provided with a list of results based on your answers. There are various filters that can be applied including education level and degree of fit. You can learn the following based on your career path:

1. Roles and responsibilities
2. Relevant job titles
3. Promotional Video
4. Pay rate / salaries
5. Job outlook
6. Education needed



2. Match it to a Career Cluster

What is a career cluster?

A career cluster is a CTE framework designed to help students navigate their own college and career pathway. Additionally, career clusters help function as a guide for students to create plans of study and postsecondary career options. Students can discover their interests, passions, and empower them for future employment opportunities. Specific details on each career cluster can be found here:

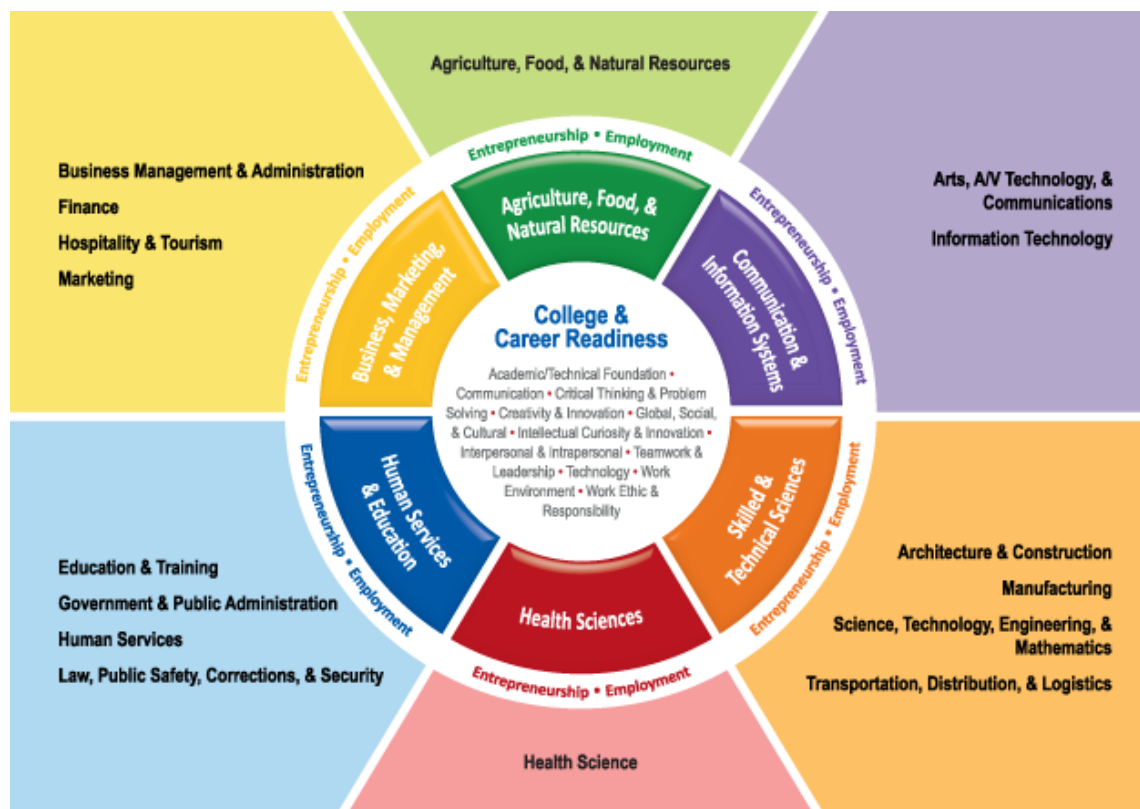


Photo Credit: <https://malloryspagnoletti.weebly.com/my-career-cluster.html>



3. Explore programs and local businesses within your cluster

From the options below, choose the cluster that you feel is closest to your interest inventory results. Please feel free to click through and explore as many programs and businesses as you choose. There will be questions regarding each program on your exit survey, so keep that in mind! Also included are business links to research further specific companies within your cluster.

Cluster:	LACC or CTE Program:	Business Information:	Business Link:
Agriculture, Food & Natural Resources	1. Ag Science 2. Culinary	1. Slagel Family Meats 2. Kilgus Farmstead	Slagel Family Meats Kilgus Farmstead
Architecture & Construction	1. Engineering & Architectural Design 2. Construction Trades	1. CAT - Engineering 2. Vogel Construction	CAT Website
Arts, Audio/Video Technology & Communications	Digital Media/Graphics	Diaz Sign Art	Diaz Website
Business Management & Administration	Inter-related Cooperative Education	U of I Extension Office	U of I Extension Website
Education & Training	Early Childhood Education	1. Boys & Girls Club of America 2. "Why I Teach"- Caila Smith	B & G Website Ms. Smith Classroom Site
Finance	Business & Finance Courses	SOCU	SOCU Website
Government & Public Administration	1. Criminal Justice 2. Fire Fighting	1. Pontiac Police Department 2. Pontiac Fire Department	Police Dept. Website Fire Dept. Website



Cluster:	LACC or CTE Program:	Business Information:	Business Link:
Health Science	<ol style="list-style-type: none"> 1. Certified Nursing Assistant 2. Medical Terminology 3. Emergency Medical Technician 	<ol style="list-style-type: none"> 1. OSF 2. Heritage Health 	OSF Website Heritage Health Website
Hospitality & Tourism	Culinary	DOT Foods - Chef Gump	DOT Website
Human Services	Early Childhood Education	School Psychologist	Human Services Jobs
Information Technology	<ol style="list-style-type: none"> 1. Computer Maintenance 2. Cyber Security/Networking 	<ol style="list-style-type: none"> 1. Geek Squad - Best Buy 2. Deque Systems 	Best Buy Website Deque Website
Law, Public Safety, Corrections & Security	<ol style="list-style-type: none"> 1. Fire Fighting 2. Criminal Justice 	<ol style="list-style-type: none"> 1. Pontiac Fire Department 2. Pontiac Police Department 	Fire Dept. Website Police Dept. Website
Manufacturing	<ol style="list-style-type: none"> 1. Welding 2. Automotive & Diesel Technology 	<ol style="list-style-type: none"> 1. Caterpillar 2. Vactor 	CAT Website Vactor Website
Marketing, Sales & Service	3. Inter-related Cooperative Education	U of I Extension Office	U of I Extension Website
Science, Technology, Engineering & Mathematics	<ol style="list-style-type: none"> 1. Engineering & Architectural Design 2. Cyber Security/Networking 3. Computer Maintenance 	<ol style="list-style-type: none"> 1. CAT Engineering 2. Autodesk Program 3. State Farm IT 4. State Farm - Bloomington 5. ATR 	CAT Engineering Website State Farm IT Website ATR Website
Transportation, Distribution & Logistics	Automotive & Diesel Technology	KSR Equipment	KSR Website



Continuing Education

[WYO Tech](#)

[Heartland Community College](#)

[Illinois Central College \(Automotive Program\)](#)

[Illinois State University Army ROTC](#)

Submit an Exit Survey

Thank you for your participation in our virtual career exploration! We would love to hear your feedback. If you are willing, please complete our survey. To access the survey, please click the link below.

[Virtual Career Exploration Exit Survey](#)

Additional Resources

[LACC Website](#)

[Career Clusters](#)

[Livingston County Farm Bureau](#)

All photos & videos were taken with COVID-19 protocols in place.